

COVID CLUE

Playing on the playgrounds, swinging for the bases, swimming in the pools, working out, and playing tennis has all been put on hold because of the quarantine. The staff at the Oswegoland Park District has had enough of the evil Commander Covid, who started this pandemic!

Are you a good enough detective to figure out which staff member finally snapped? Who did it? Where? And what weapon did they use?

2-3 clues will be available at each of the suspected locations. Look for the clues and cross them off your master list to solve the mystery. Clues will show a suspect, location, and/or a weapon.

Once you've figured out who committed the crime, where, and with what, please email jgranholm@oswegolandpd.org with your answer. Participants will be entered in a drawing to win an Oswegoland Park District Swag Bag!

Play May 10-23. Be sure to maintain appropriate social distancing while you investigate and please don't touch or remove the clues.

Good luck!



WHO did it?



Adventurous Abbie

Said to be smart, but jumps out of perfectly good airplanes.



Ball Game Brian

Has a wicked swing and a deadly accurate arm. Plays to win.



Chef Chad

Makes a mean steak and lobster, but burns his toast every time.



Cowgirl Cindy

Uses her lasso to corral her crew every evening before the cows come home.



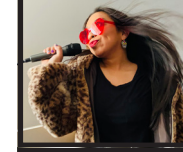
Crafty Cori

Knits like a granny, but is a true sew-ciopath.



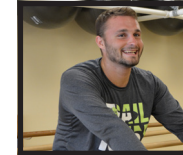
Eccentric Erik

A witty guy who is always quick with a comeback.



Rockin' Rockie

Happiest when performing in front of her two dogs. Doesn't like sharing the limelight.



Zippy Zack

Zips around with reckless abandon. All gas no brakes.

with WHAT?



Bus



Golf Club



Lawn Mower



Pool Noodle



Tree Branch



Crayons



Tap Shoe



Banana Peel

and WHERE?



Grande Park

26333 Grand Park Blvd.
Plainfield



Prairie Point Park

4120 Plainfield Rd.
Oswego



Deerbrook Park

2220 Barrington Dr. West
Aurora



Tuscany Trail Park

445 Grapevine Tr.
Oswego



Wormley Heritage Park

331 Century Dr.
Oswego



Old Post Park

116 Old Post Rd.
Oswego



Civic Center Park

5 Ashlawn Ave.
Montgomery



Ogden Falls Park

375 Ogden Falls Blvd.
Oswego