

ZONING / PLANNING DATA

1. PROPERTY ADDRESS:
2031 FARMINGTON LAKES DRIVE
OSWEGO, IL 60543

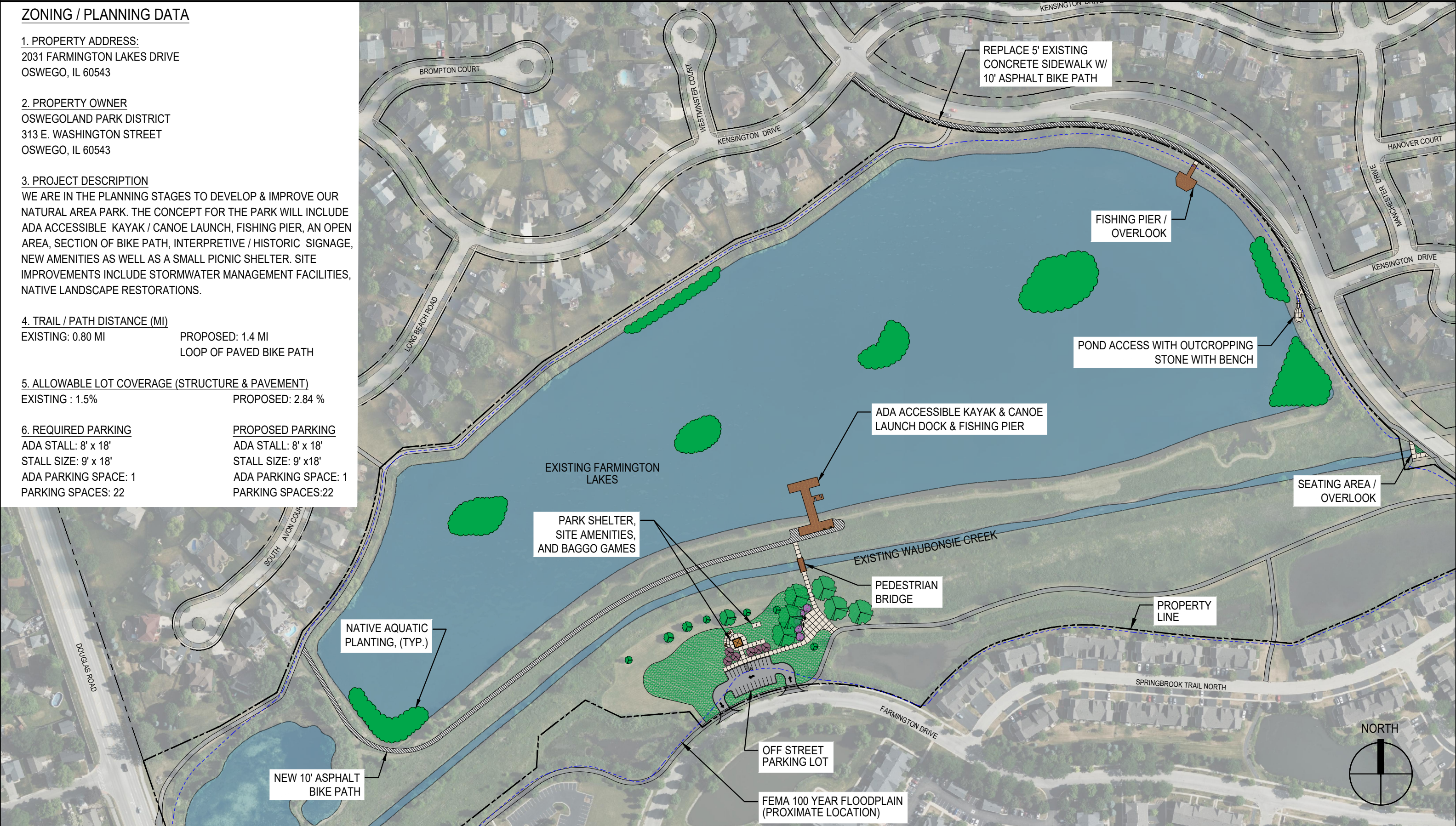
2. PROPERTY OWNER
OSWEGOLAND PARK DISTRICT
313 E. WASHINGTON STREET
OSWEGO, IL 60543

3. PROJECT DESCRIPTION
WE ARE IN THE PLANNING STAGES TO DEVELOP & IMPROVE OUR NATURAL AREA PARK. THE CONCEPT FOR THE PARK WILL INCLUDE ADA ACCESSIBLE KAYAK / CANOE LAUNCH, FISHING PIER, AN OPEN AREA, SECTION OF BIKE PATH, INTERPRETIVE / HISTORIC SIGNAGE, NEW AMENITIES AS WELL AS A SMALL PICNIC SHELTER. SITE IMPROVEMENTS INCLUDE STORMWATER MANAGEMENT FACILITIES, NATIVE LANDSCAPE RESTORATIONS.

4. TRAIL / PATH DISTANCE (MI)
EXISTING: 0.80 MI
PROPOSED: 1.4 MI
LOOP OF PAVED BIKE PATH

5. ALLOWABLE LOT COVERAGE (STRUCTURE & PAVEMENT)
EXISTING : 1.5%
PROPOSED: 2.84 %

6. REQUIRED PARKING
ADA STALL: 8' x 18'
STALL SIZE: 9' x 18'
ADA PARKING SPACE: 1
PARKING SPACES: 22
PROPOSED PARKING
ADA STALL: 8' x 18'
STALL SIZE: 9' x 18'
ADA PARKING SPACE: 1
PARKING SPACES: 22



CONCEPTUAL SITE PLAN

FARMINGTON LAKES PARK

